

## DID YOU KNOW?

**STORM SEWER WATER  
IS NOT TREATED**

**POURING ANY CHEMICALS  
IN THE STORM SEWER  
POLLUTES RIVERS AND LAKES**

**DISPOSING OF  
POLLUTANTS INTO A STORM  
SEWER IS ILLEGAL**

**ANY AMOUNT OF CONTAMINANT  
INTO OUR WATER IS  
CONSIDERED A SPILL**

**ONE LITRE OF MOTOR OIL  
CAN CONTAMINATE ONE  
MILLION LITRES OF WATER**

## THE DIFFERENCE IN SEWER SYSTEMS

### SANITARY SEWER

This system collects sewage and wastewater from toilets and sinks in your home. This water goes to a wastewater treatment plant where it is treated.



### STORM SEWER

This system collects rainwater, melted snow, and surface water through storm grates that drain directly into the nearest creek, river or lake. This water is NOT treated.



## REGULATIONS

Spills are regulated under the *Environmental Protection Act (EPA) R.S.O. 1990 – Section 92.2, 93.1* and the *Clean Water Act*. As well, many towns and cities have their own enforceable Sewer Use By-Law that governs spills in their municipalities.

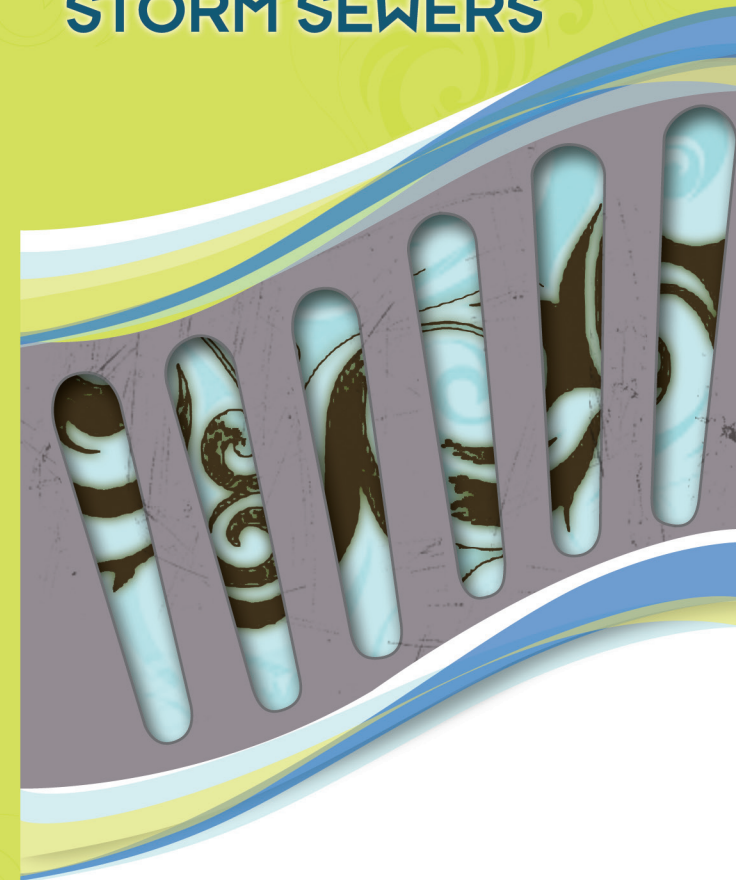
Call the municipality, town or city if you see someone pouring chemicals, oil, paint or any other suspicious material into a storm sewer catch basin, sanitary sewer or land drainage works (i.e. a ditch).



**London**  
CANADA

Contact information:

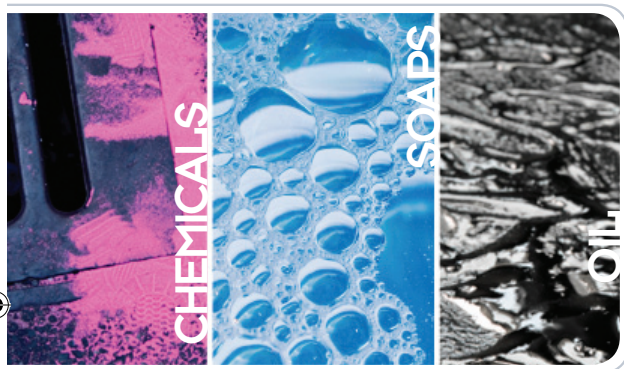
## FROM DRAIN TO DRINKING WATER STORM SEWERS



**WHY WATER  
SHOULD BE THE  
ONLY THING  
ENTERING OUR  
STORM SEWERS**

## ARE YOU POLLUTING OUR WATER?

Disposing of chemicals, paints, motor oil and other pollutants into storm sewer catch basins, sanitary sewers or on the ground can lead to contamination of our creeks, rivers and lakes. These rivers and lakes are our drinking water source and we must keep them clean.



## WHAT IS A SPILL?

A spill can be any size, big or small. A spill occurs anytime anything is dumped into a sewer drain that isn't water. These spills can be chemical, biological, or gaseous in nature.

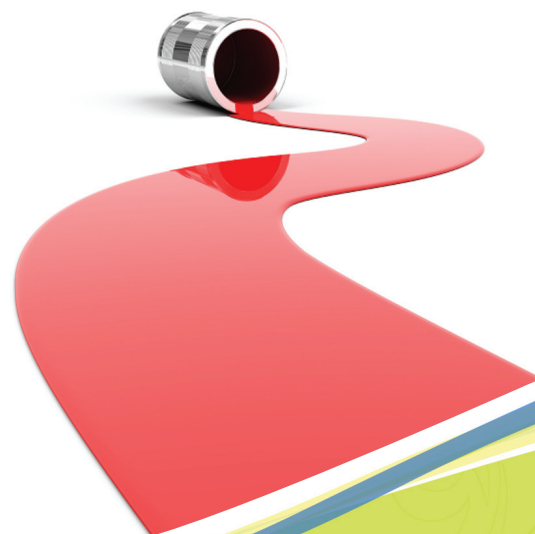
## WHAT ARE THE CONSEQUENCES OF A SPILL?

Storm drain runoff is not treated. It is important that pollutants such as animal waste, automotive fluids, garbage and chemicals do not end up in our storm drains. If a hazardous liquid waste material is spilled into a storm drain it can cause destruction to our source water and well water. This will not only impact us but wild life and aquatic life as they depend on this water to live.

## WHAT YOU SHOULD DO

- Sweep outdoor spills and dispose of in the trash (landfill) if not hazardous. If hazardous take to a waste depot
- For wet spills like oil, apply cat litter or another absorbent material, then sweep and bring to a household hazardous waste collection centre
- Dispose of unused pesticides, antifreeze and other hazardous chemical containers at your local hazardous waste facility
- When outside choose soaps, cleaners or detergents labeled non-toxic, phosphate-free or biodegradable
- Prevent spills with secondary containment, drip pans

## ONLY RAIN DOWN THE DRAIN



## THE DON'TS

