



NWWC Winnipeg 2024

CBRM Wastewater Strategy

WSER Challenges in Atlantic Communities

November 4, 2024



CBRM
Wastewater
Operations



Background

Historical Perspective

Strategy Development

Obstacles

Declining Population

Political Stability

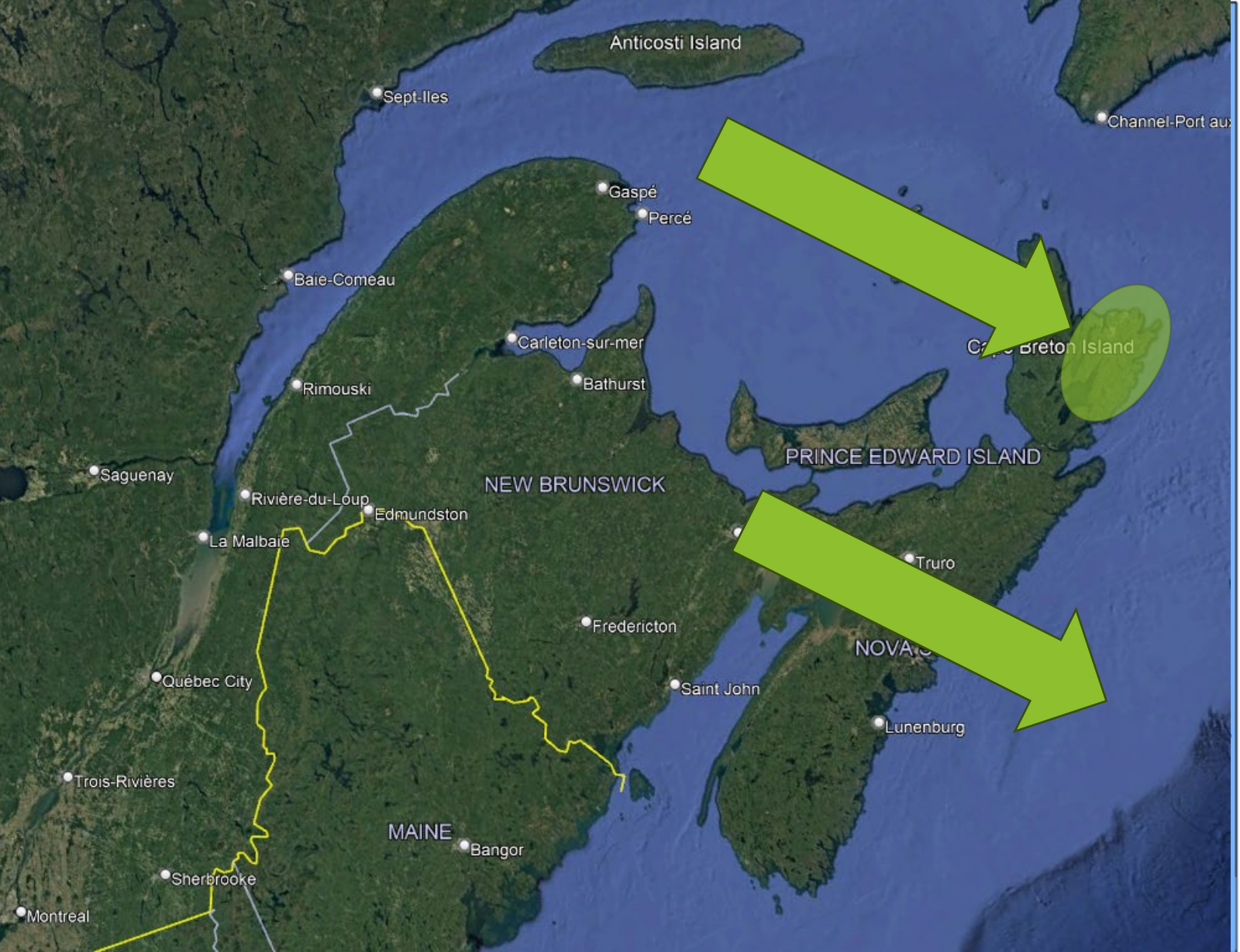
Competing Priorities

Progress

Completed

Construction / Design

Future



- Serviced Pop. > 80,000
- Currently 45,000 untreated, plus 28,000 non-compliant with NPS.
- Urban centers scattered across 2500 km².
 - Ottawa 2780 km²; 995,000
 - Winnipeg 465 km²; 850,000
- Public Works divided into 3 divisions:
 - North
 - Central
 - East

*Early Pollution Control Studies
(1970, 1974)*

*Industrial CB Sewage Treatment
Study (1990)*
*Industrial CB Receiving Water,
STP Siting, Wastewater Characterization
& Sludge Management Studies (1994)*
CBRM Formed (1995)

CCME Wastewater Strategy (2009)

CBRM Wastewater Strategy (2009)
*Wastewater System Effluent Regulations
WSER (2012)*
*Sydney Harbour West Preliminary
Design (2018)*
*CBRM 7 WWTP ERA's & Pre-Design
Studies (2018)*

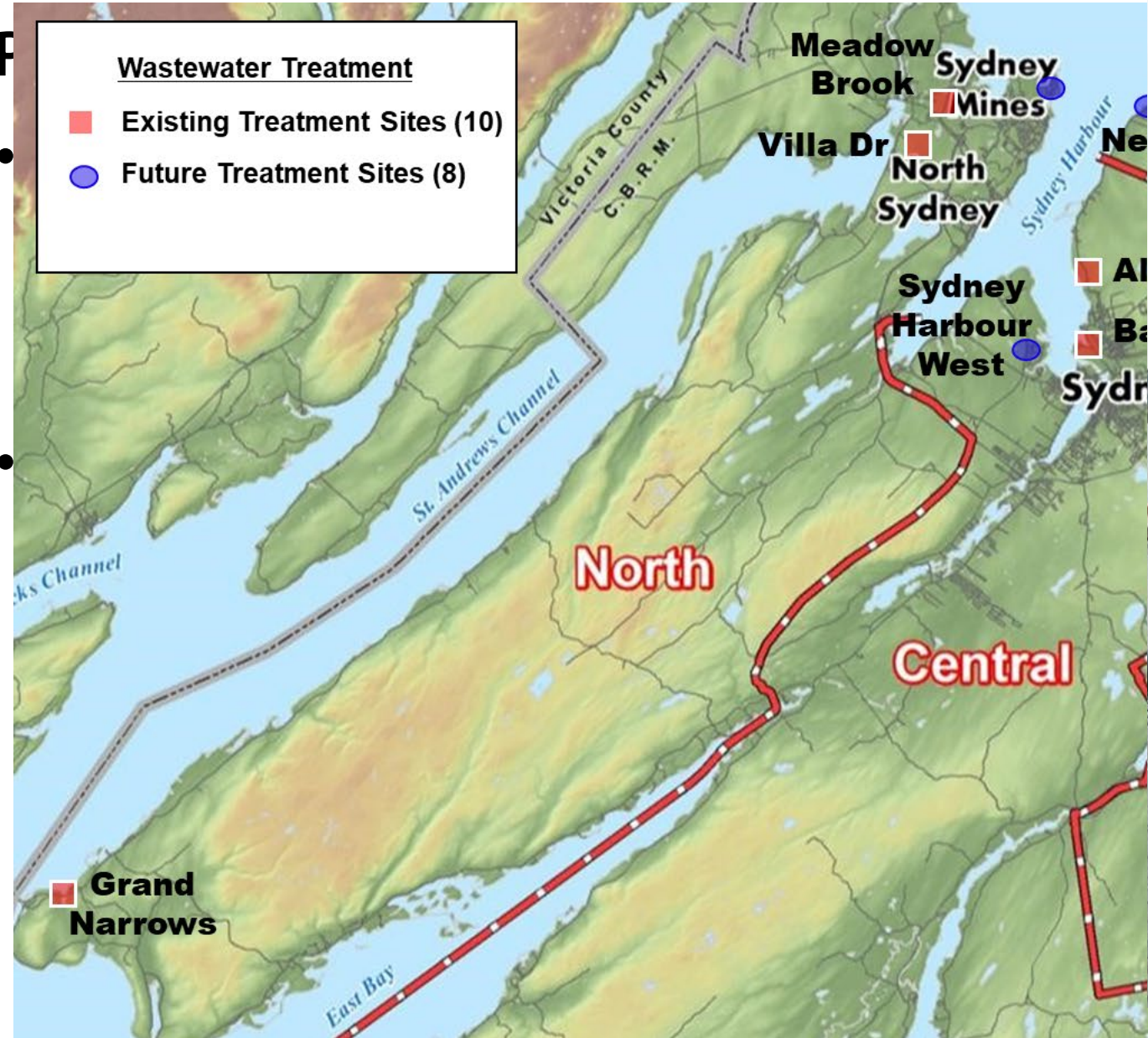
1970

2024



CBRM Pollution Control History





CBCL Treatment Study (1961)

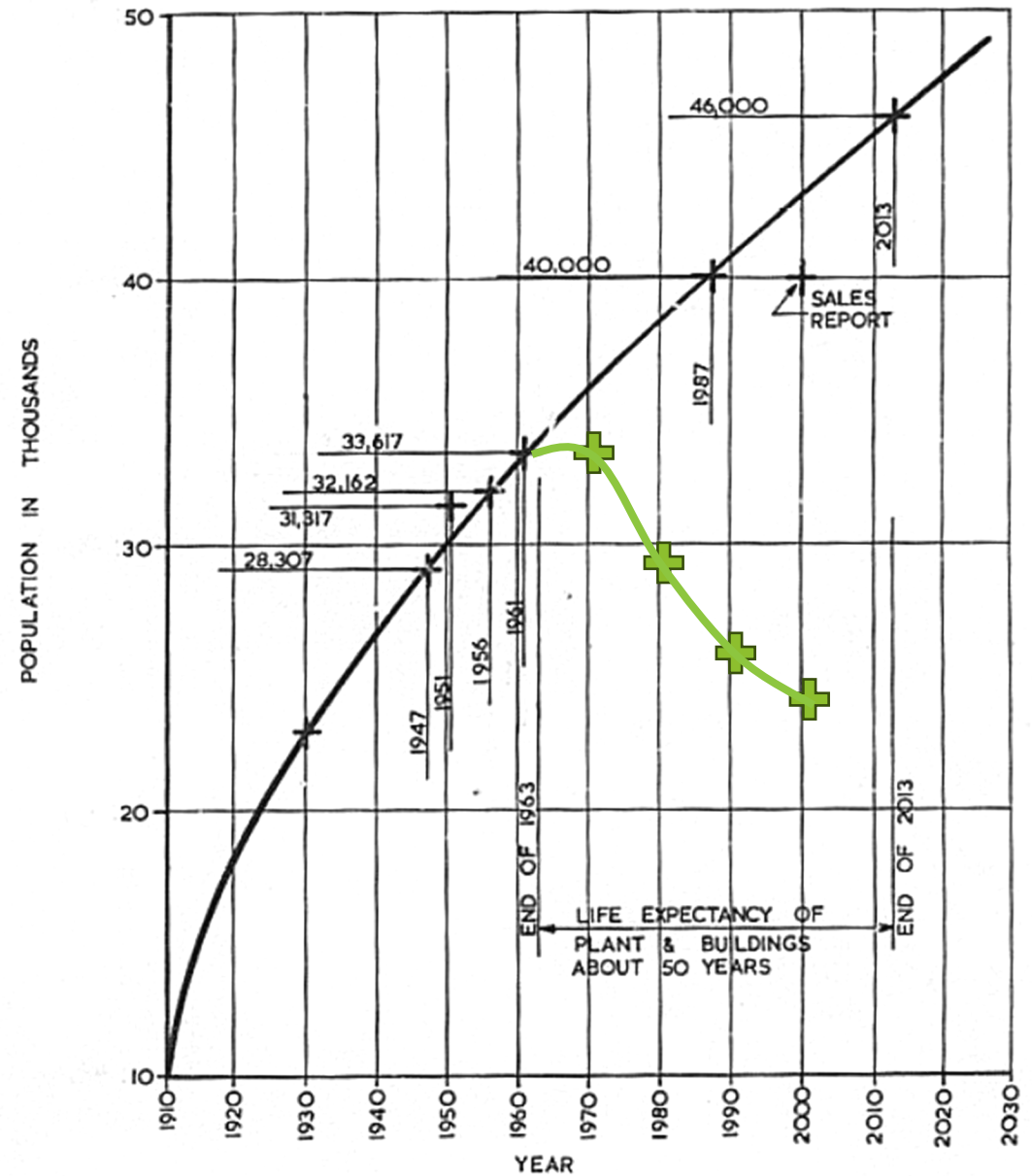
- Sydney Population Growth at 1.2%
 - 28,300 to 33,600 (1947 – 1961)
 - Design Population 40,000 for 25 yr, 46,000 for 50 yr.

Predictions vs Actual

- Steel Industry slowdown and ultimate closure by 1981
 - Sydney Population < 23,000 by 2006

Impact on Pollution Control

- Tax revenues decreasing
- Uncertain Future
 - Plant Design parameters ?
 - Good Place to invest ?



Industrial Cape Breton

- 8 Municipalities

- Sydney (Inc. 1785)
- Glace Bay (Inc. 1901)
- Dominion (Inc. 1906)
- North Sydney (Inc. 1885)
- New Waterford (Inc. 1913)
- Sydney Mines (Inc. 1889)
- Louisbourg (Inc. 1901)
- County of Cape Breton (1879)



CBRM Amalgamation (1996)

- Forced by the province

- CBRM Population 115,000 (1996); 93,700 (2021)
- 1995 - 8 Municipalities (77 Council members)
- 1996 – 1 Municipality (22 Council members)
- Currently 12 Councillors + Mayor

- Inherited Debt of > \$60 M

- Debt grew to \$129 M by 2010



Early Pollution Control Studies (1970, 1974)
 Sydney Steel Closure (1988)
 Tar Ponds Cleanup - Failed (1986 - 1995)
 Industrial CB Sewage Treatment Study (1990)
 Industrial CB Receiving Water, STP Siting, Wastewater Treatment & Sludge Management Studies (1994)
 CBRM Formed (1995)
 Muggah Creek Interceptor (1997)
 SYSCO & Underground Mining Cease Operations (2001)
 Battery Point CEPT WWTF (2005)
 Tar Ponds Cleanup II (2007 - 13)
 CCME Wastewater Strategy (2009)
 Dominion WWTF Commissioned (2010)
 CBRM Wastewater Strategy (2010)
 WSER (2012)
 Wastewater System Effluent Regulations Design (2011)
 Sydney Harbour West Preliminary CBRM 7 WWTP ERA's & Pre-Design Studies (2018)

1970

5 WTP's Constructed 1996 - 2010

2024



Obstacles –Competing Priorities



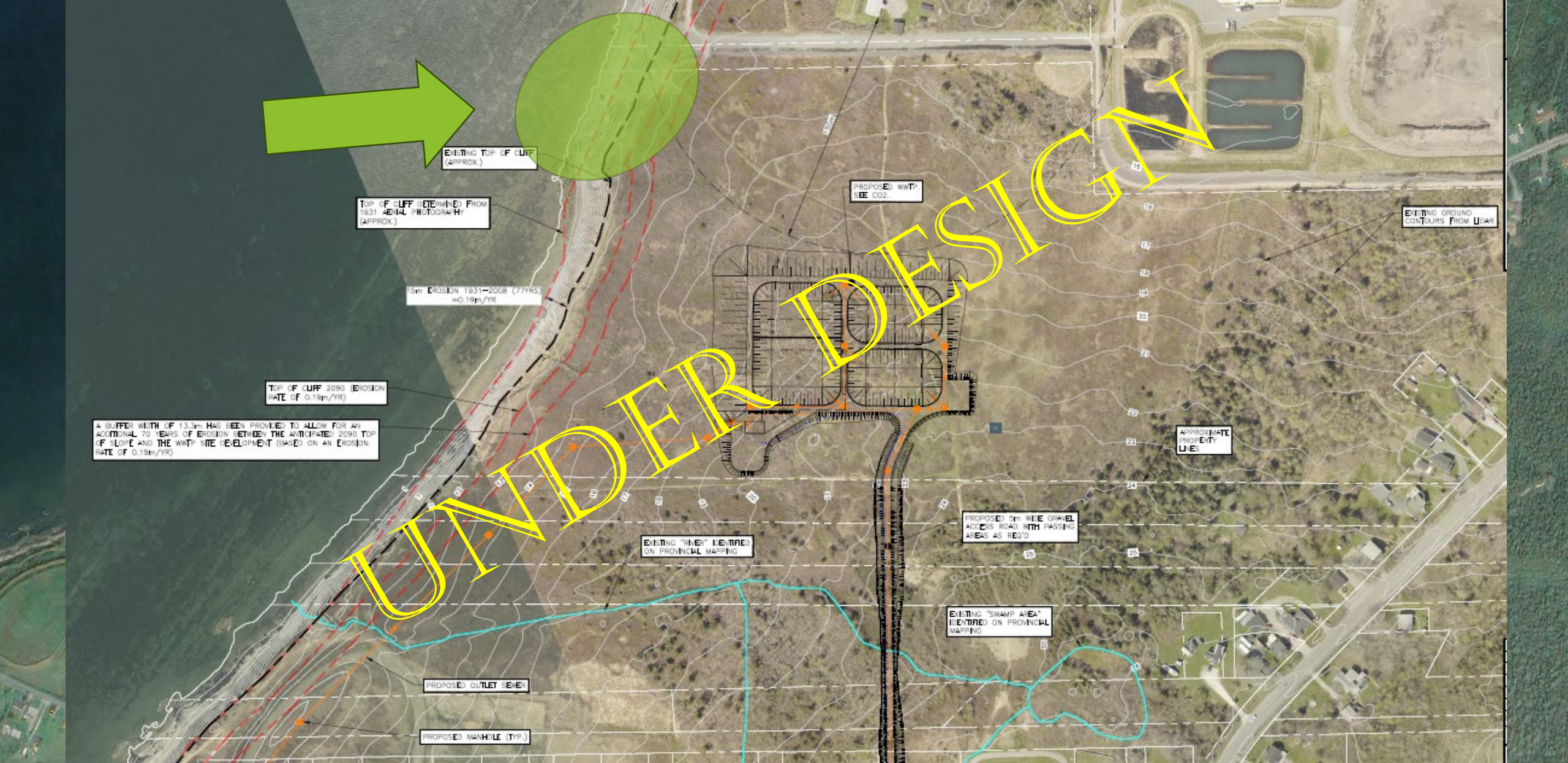


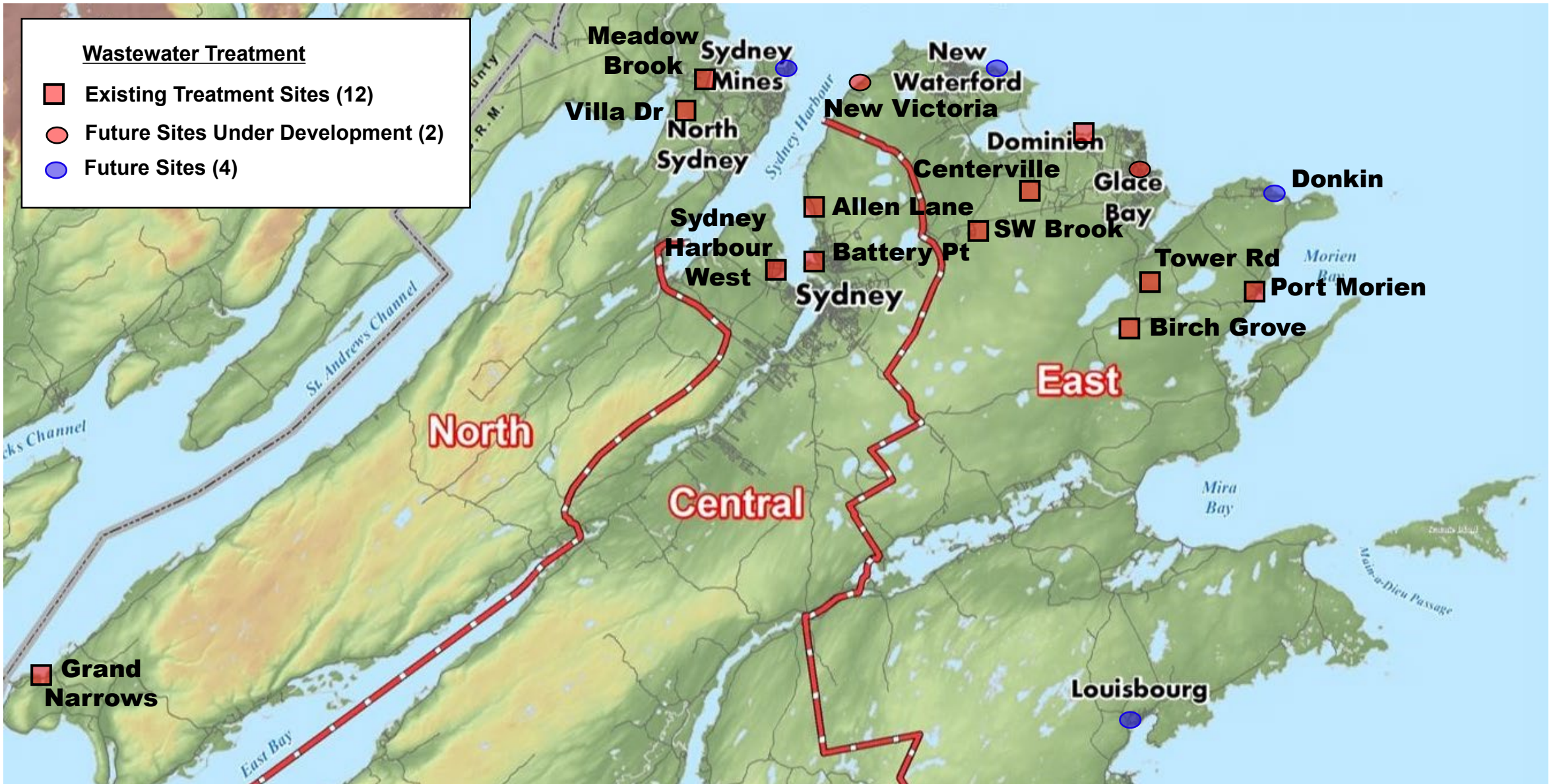


Progress – Sydney Harbour West WWTF









CBRM Progress Update (2024)

