

Winnipeg Sewage Treatment Program (WSTP)



Linda McCusker
Project Director – WSTP
City of Winnipeg



Andrew Blanchette
Program Leader – WSTP
Veolia North America

Land Acknowledgement

Winnipeg is located in Treaty One Territory, the home and traditional lands of the Anishinaabe (Ojibwe), Ininew (Cree), and Dakota peoples, and in the National Homeland of the Red River Métis. Our drinking water comes from Shoal Lake 40 First Nation, in Treaty Three Territory.



Safety Moment

*Think Before
You Flush...*



Just because things are small enough to flush doesn't mean you should.

Look for the "Do Not Flush" symbol.



If a wipes package has this symbol, please dispose of it in the trash, not the toilet.



When in doubt, throw it out!

DO NOT FLUSH!!!

Baby Care/
Sanitary Items



Baby wipes, diapers, sanitary pads, tampons, condoms, toilet paper tubes, packaging

Grooming
Items



Facial wipes, tissue, cotton swabs & balls, pads, makeup sponges, sheet masks, dental floss, teeth whitening strips, hair, & hair weaves

Household
Items

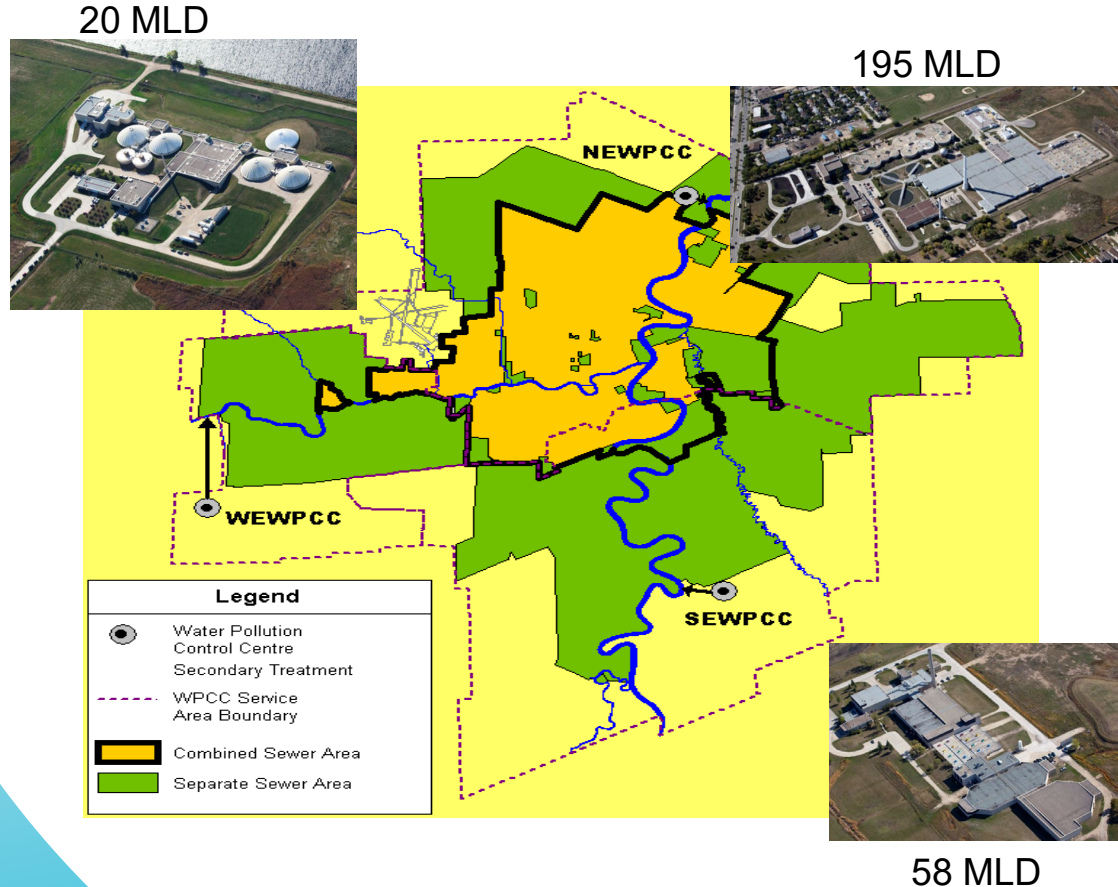


Cleaning wipes, paper towels, rags, cooking oil, grease, fats, motor oil, medicines, syringes, bandages, trash, cat litter, charcoal, & food items

Winnipeg's Wastewater Treatment and Collection

Statistics (2023)

- 3 sewage treatment plants
- 2,579 km of sewer mains
- 1,173 km of land drainage sewers
- 74 wastewater pumping stations



Need for Strategic Partnership

- Sewage regulations that required a multi billion dollar capital investment within a prescribed timeline
- Facilities that must continue to operate during upgrades
- Specialized skillsets will be needed over short term

Requirements

Status

- Aging wastewater facilities
- Capital group sized to maintain existing infrastructure
- Limited skilled resources in the region
- New staff recruitment difficult

Partner Selection Process

Expression of Interest and Request for Quotation

- Evaluation of market interest
- Guidance on type of partner

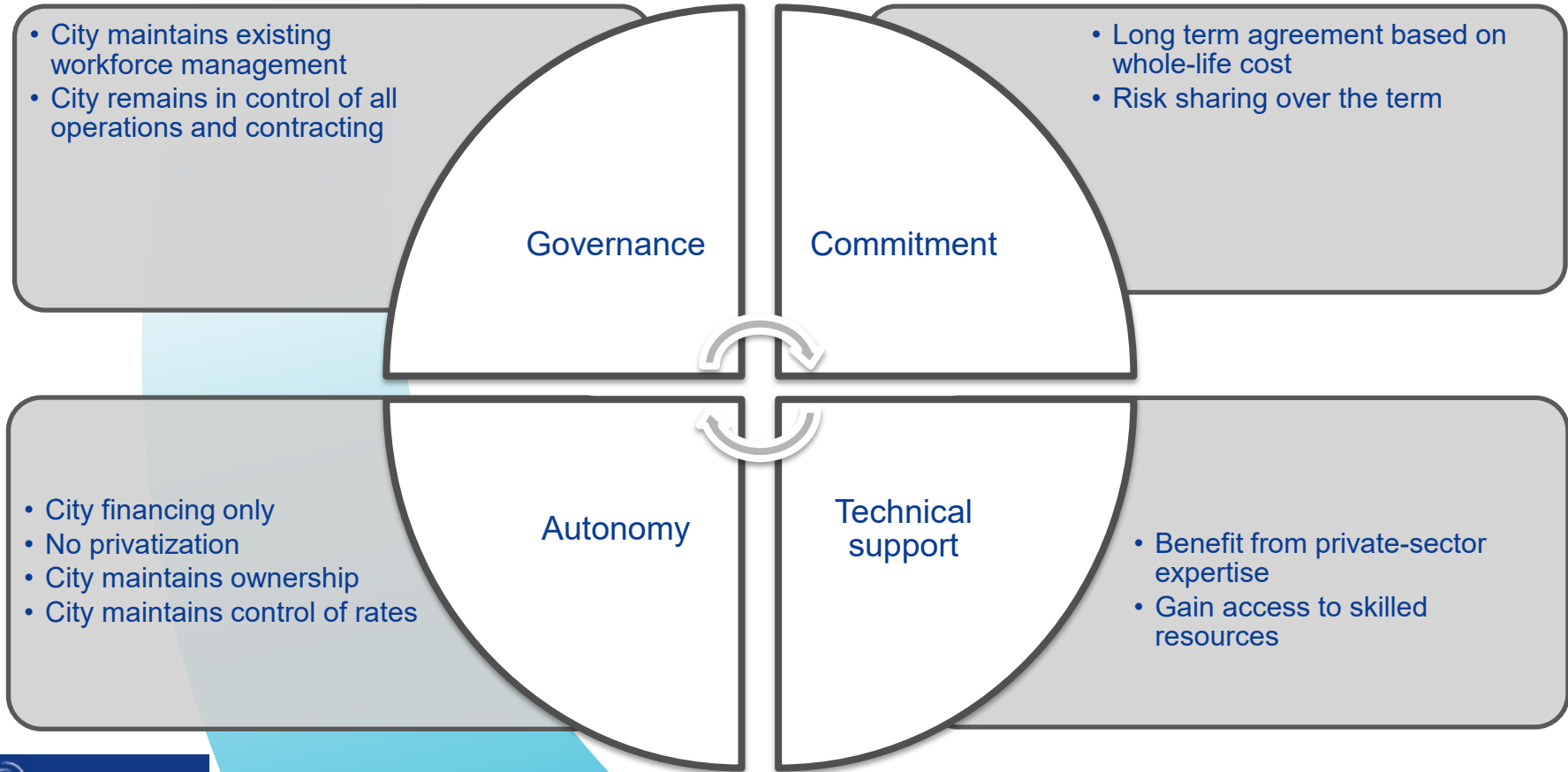
Collaborative Workshops with selected private groups

- Input of diverse partner
- Problem solving with client
- Understanding experience of others

Terms of Reference – Request For Proposal

- Reasonable confidence about expected answers
- Knowledge of long term possible partners
- Preparation of selection criteria

Strategic Partnership Description



Program Principles

*Open and Honest
Communication*

*No Fault /
No Blame*

*Best for Program /
Best for Job*

**Winnipeg Sewage
Treatment Program**

*Open book
accounting*

*Collaborative
approach;
Partnership
spirit*

Program Structure

*Performance
based
compensation*

**Winnipeg Sewage
Treatment Program
(WSTP)**

30 years

*Program based
on a non-
traditional
infrastructure
delivery model*

Program Scope

**Advice &
Recommendations
Relating to**

*Management
and operation of
the Facilities*

*Assessment,
Planning, and
Delivery of
Operational
Improvements*

*Assessment,
Planning, and
Delivery of
Upgrades and
Capital
Modifications*

Management Structure of the WSTP

Program
Leadership
Team

Senior City and Veolia Committee:

- ✓ Represents the organizations' management
- ✓ Ability to make decisions for each partner organization
- ✓ Has a long term perspective

Program
Management
Team

City and Veolia Managers:

- ✓ Manages blended program teams
- ✓ Addresses operational and organizational issues

Program
Teams

City and Veolia Resources:

- ✓ Delivers Major Capital Projects
- ✓ Handles Operational Readiness
- ✓ Performs Maintenance Initiatives

Benefits to City and Ratepayers

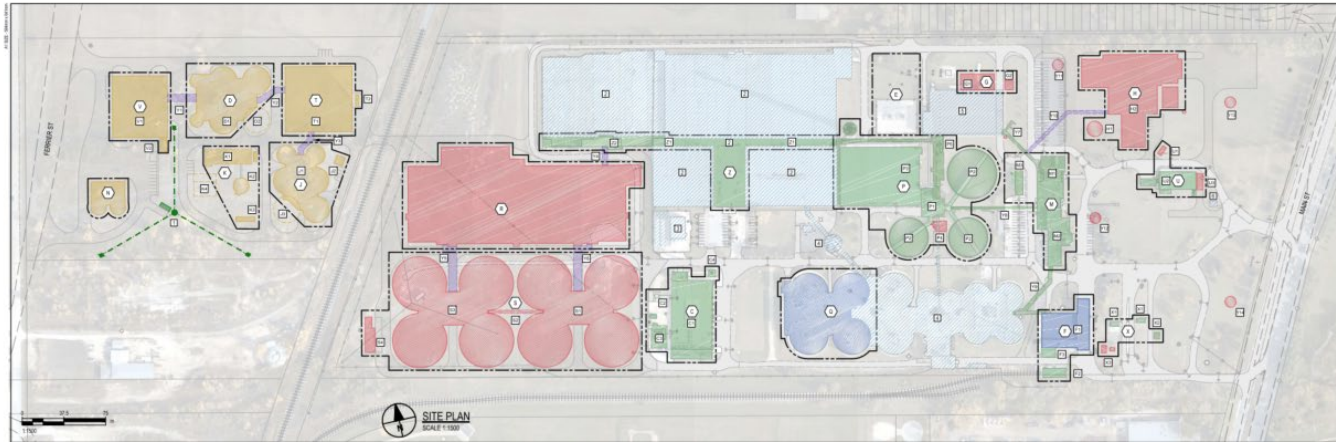
- Access to specialized expertise on an as-needed basis
- Full-time support and oversight for capital project delivery
- Guidance and assistance for operational readiness
- Continued focus on long-term program objectives
- Development of synergies and sustainable initiatives

Lessons Learned

- Team building efforts pay off
- City staff are benefiting from Veolia's expertise in terms of project management and operations
- Methods to measure benefits and value need to be defined early and redefined as the process evolves
- Internal education on value of partnership is important
- Prepare for criticism, skepticism

WSTP Projects

NEWPCC



SEWPCC

